

# Monobelt®

A belt filter press manufactured using a new patented design incorporating a pre-thickener and a sludge press.



# Monobelt®

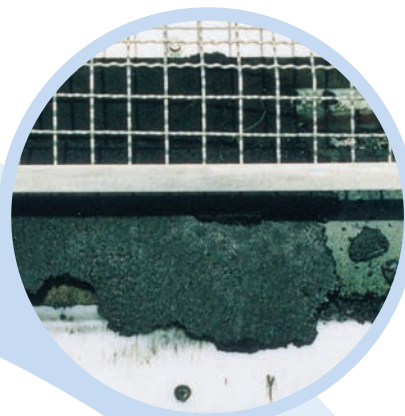
## How it works

The Monobelt® belt filter press is an innovative press which uses an endless belt. This has meant that as well as producing a dryer cake than traditional equipment using the same width of cloth, the sludge throughput can be higher.

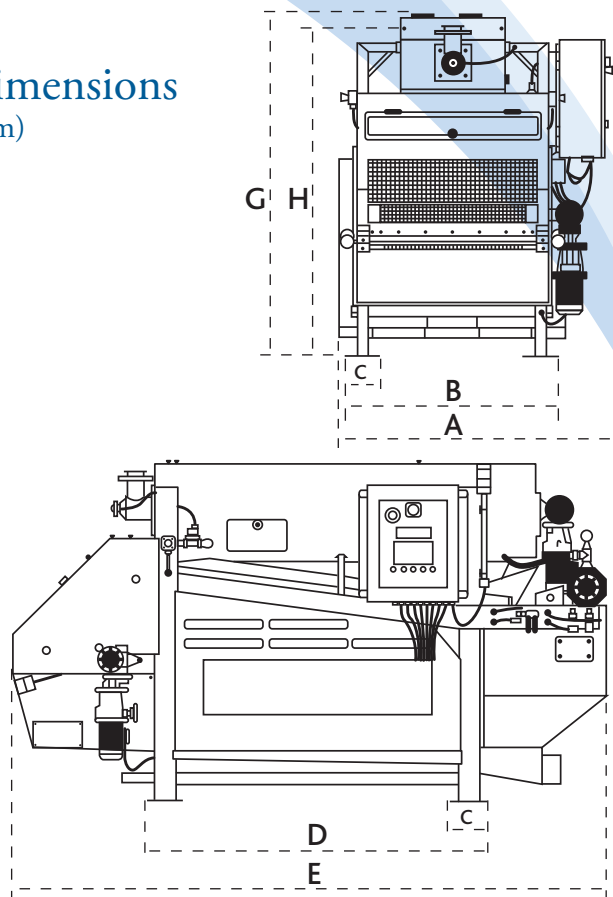
The sludge press takes pre-thickened sludge and spreads it evenly onto the main filter cloth via a series of baffles. Final dewatering occurs as the sludge cake passes between the perforated cylinder, which is covered with the secondary cloth and the main cloth. The alignment and tension of the belt are controlled from the main control panel using pistons and pneumatic actuators. The machine operation is monitored by sensors which halt the operation in the event of a malfunction. The control panel provides fully automatic operation.

## Features & Benefits

- ✓ Pre-thickener and belt press combined.
- ✓ Small footprint.
- ✓ Input solids of 0.5 - 3% DS dewatered to 18 - 30% DS.
- ✓ Patented design with CE marking.
- ✓ Continuous belt with extended belt life in excess of five years.
- ✓ Coated carbon steel rollers providing a higher pressure therefore higher dry solids.
- ✓ Simple to maintain, belt can be changed within two hours.
- ✓ Commissioning, servicing and maintenance service available. Installation also available.



## Dimensions (mm)



UNIT MAX FLOW m <sup>3</sup> /hr*	MINI 8	MIDI 12	MAXI 20	MAXI+ 40
(A)	1520	1920	2220	2600
(B)	1220	1620	1920	2240
(C)	220	220	220	240
(D)	1920	1920	1920	2240
(E)	3316	3316	3316	3585
(F)	187	187	187	187
(G)	1930	1930	1930	1950
(H)	1850	1850	1850	2130

\*Max flow depends on type of sludge & concentration of DS.  
Allerton® reserves the right to alter the specifications and dimensions without notice.

2 YEAR WARRANTY ON  
ALL WORKING PARTS

FOR FURTHER INFORMATION  
CALL: 01529 305757  
EMAIL: [sales@allertonuk.com](mailto:sales@allertonuk.com)